

SOLAR BIRD BATH AND FEEDING TABLE

Attracts a variety of wild birds

Read all instructions carefully before assembling and using this bird bath. Retain them for future reference and if you are passing this product to a third party, always make sure this documentation is included.

1 Intended Use

This product is intended to be used as an outdoor bath/table for wild birds. This item is only designed for private use, not for commercial use.

2 Safety Information

- Keep children away during the assembly of the bird bath.
- Product contains small parts- choking hazard!
- This product is not a toy. Children should not play with this product.
- Do not climb on this bird table/bath.
- Regularly inspect this product for damages and wear.
- Check connections and joints and tighten all the fittings if necessary.
- Do not use if damaged, unstable or unsafe.
- This bird bath should be installed on stable, level and horizontal surface.
- Choose the location away from predators and large animals.
- Secure to the ground with ground pegs provided.
- Keep batteries out of reach of children.
- Never recharge non-rechargeable batteries.
- Do not short-circuit batteries.
- Never allow children to insert, replace or dispose of batteries.

3 Installation and Location Information

- Install the bird bath on a solid, stable and horizontal surface away from foot traffic and children play areas.
- Ensure the table/bath is secure to prevent it from falling. Secure to the ground in a best possible way depending on the surface and location. On the grass the feeder can be secured with guy ropes and ground pegs.
- Relocate the bath from time to time to help to deter predators.
- This bird bath features solar light built in to the top section. For best performance of the light please place your bird bath where the solar panel will get full direct sunlight during the day and away from possible sources of light at night.

4 First Time Use

With the solar light switched off, place it in direct sunlight for 24-48hrs to charge the battery to its full capacity. Once the battery has been fully charged, remove the light from bird bath (Fig. 11), unscrew the light diffuser and slide the switch to ON position.

5 Cleaning , storage and maintenance

- To keep wild birds healthy, clean the bird feeding bath regularly.
- Clean the surfaces with slightly dampened, lint-free cloth.
- In the event of severe soiling use mild cleaning solution or disinfectant, ensure that all stubborn dirt is removed.
- Allow the bird bath to dry completely before storage to avoid the mould or damage. Store this item in dry, dust-free place away from direct sunlight or other sources of heat and away from traffic to avoid tripping hazard.

6 Battery Replacement

Remove the light from the bird bath (Fig. 11). Unscrew the light diffuser in anti-clockwise direction. Open the battery compartment. Replace old battery with new one of the same specification. Replace battery cover and light diffuser. You can check if new battery works by covering the solar panel with your hand- this should activate the light.

Battery Specification: 1x AA 1.2V 600mAh Ni-MH Rechargeable

7 Disposal

This item should be handed in for recycling in accordance with local environmental regulations for waste disposal and in accordance with EC Directive 2002/96/EC – WEEE (Waste Electrical and Electronic Equipment). Dispose of the item at a suitable collection or recycling point. For more information or to locate nearest collection point, please contact the local authorities responsible for waste disposal.



**WARNING! THIS IS NOT A TOY
FIX TO GROUND IN STRONG WINDS**

SOLAR BIRD BATH AND FEEDING TABLE

Attracts a variety of wild birds

Parts

Ensure that all the parts listed below are enclosed. If parts are missing, please contact your retailer. This product requires more than one person to assemble. Please ensure that the unit is secure before use.



STEP 1
Place the base on a flat/level surface and screw the lower stem into place.



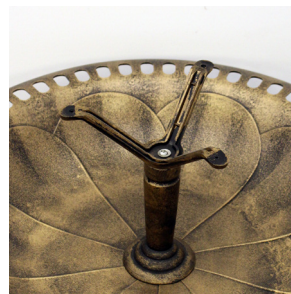
STEP 2
Place the growing trough into place.



STEP 3
Screw the upper stem through the growing trough into the lower stem.



STEP 4
Attach the table support to the bath bowl with the large screw. Screw to lower stem.



STEP 5
Attach the table support using the bolt and metal washer



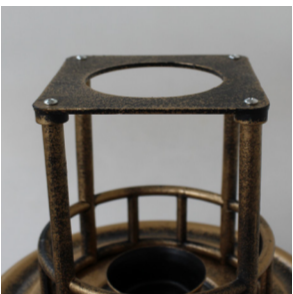
STEP 6
Place the table platform and secure using 3 small screws.



STEP 7
Push the decorative bowl into the center of the table platform.



STEP 8
Fix the canopy supports into place with 4 small screws.



STEP 9
Secure the canopy frame into place using 4 small screws.



STEP 10
Gently clip the canopy into place on the canopy frame. A small click should be heard once secure. **DO NOT APPLY TO MUCH PRESSURE.**



STEP 11
Finally insert the Solar Powered lantern into place. Ensure that the light is active by turning the switch to on. This is located under the lid.